

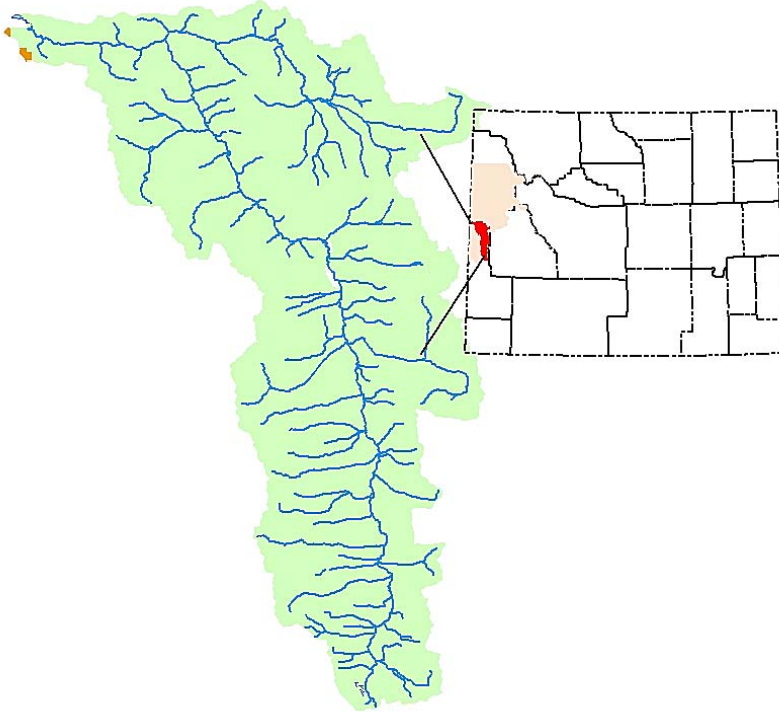
AQUATIC HABITAT PRIORITIES

REGION: Jackson

WATERSHED NAME: Greys River

PRIORITY: 4

HUC: 1704010305



LAND STATUS: 2%
Private, 98%Public

SPECIES THAT COULD BENEFIT FROM ACTIVITY IN THIS WATERSHED:

Native fish: Snake River Cutthroat, mountain whitefish, Utah sucker, mountain sucker, redbside shiner, Paiute sculpin

Sport fish: brook trout, brown trout, rainbow trout, Bear River cutthroat

Big Game: Mule deer, elk, moose, and big horn sheep.

Other: Beaver, grizzly bear, black bear, bald eagle, goshawk, mountain lion and wolves inhabit the area.

CURRENT HABITAT CONDITIONS/LIMITING FACTORS:

Native Trout & Non-game fish– Road systems, timbering, grazing practices, and natural soil movement produce and inordinate amount of sediment that goes into the Greys River and its tributaries. Trout spawning and nursery habitat is limited by this sediment and channel confinement from road entrainment, vegetative succession and loss of wetlands.

Beaver-lack of dam building material (i.e. aspen and cottonwood) within the riparian areas lower on the drainage

Big Game - advanced successional stages i.e., depletion of mtn. shrub, aspen, willow communities; recreational impacts within designated migratory corridors, spring and fall

ranges. Tolerance for elk off feed grounds has declined with urban and associated recreational expansion. Increases in winter recreation may be a contributing factor.

T&E/Sensitive Species – *general habitat fragmentation due mostly to increased recreational activities*

CONSERVATION EASEMENTS/AGREEMENTS:

With about 98% of this area being public land, acquisitions, easements, land trades are not an option. Working with grazing permittee's and USFS to resolve livestock management conflicts and potentially buying out grazing leases may be an option. Habitat restoration and enhancement can best be achieved by formulation and implementation of an aggressive prescribed fire program, this also includes identifying areas for wild land fire use fires.

CURRENT ACTIVITIES/PROPOSED PROJECTS:

The Greys River Ranger District has a draft Landscape Assessment (LSA) and some habitat projects in the planning. The priority in this district is fuels reduction around the town of Alpine. This project may open future possibilities. In 1994, WGFD and USFS carried out vegetative inventories in the drainage. These inventories initiated vegetation treatments for the Moose Creek and Blind Bull areas. Finally, RMEF purchased the Squaw/Weiner Creek grazing AUMs.