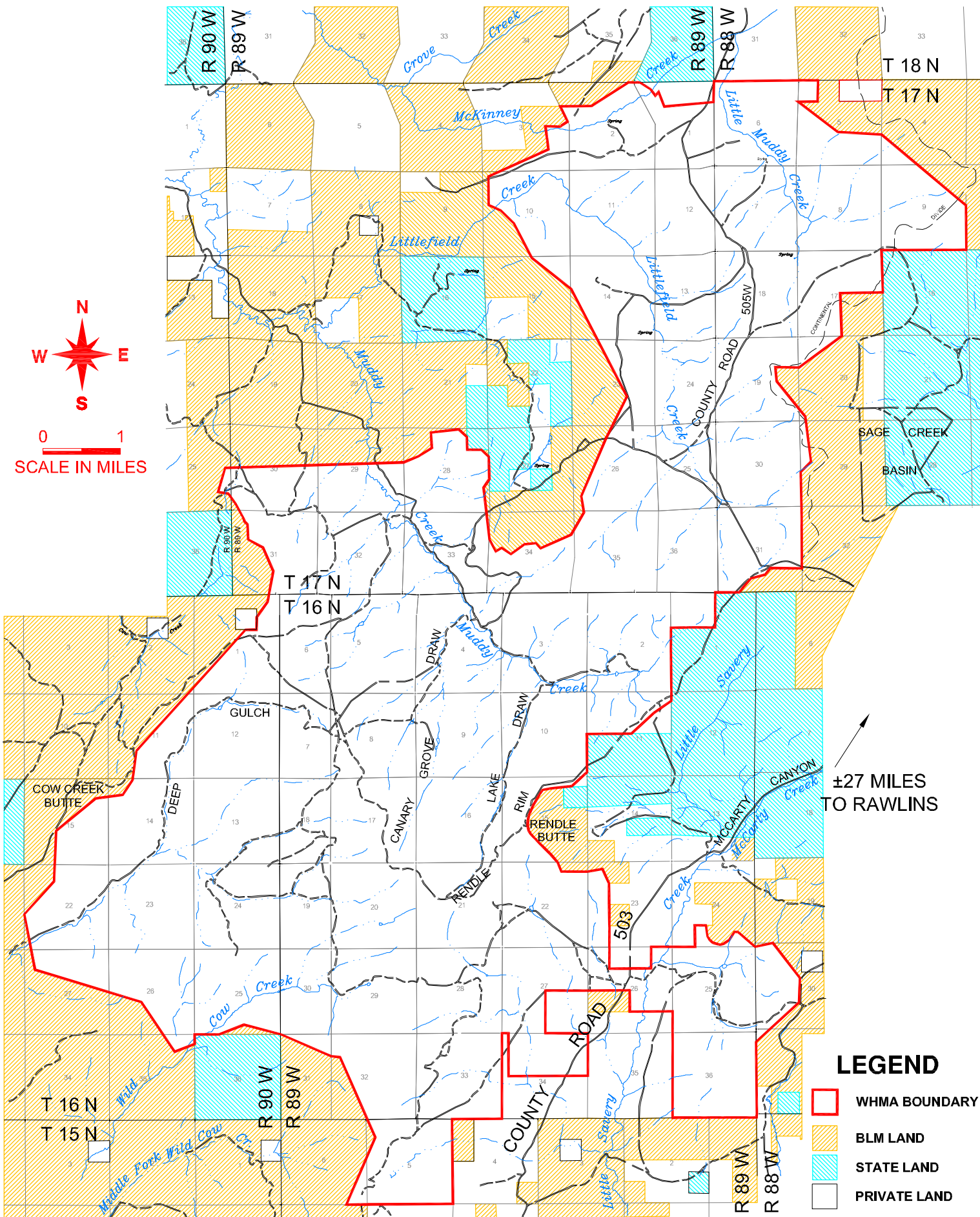


# Red Rim - Grizzly Wildlife Habitat Management Area



**LEGEND**

- WHMA BOUNDARY
- BLM LAND
- STATE LAND
- PRIVATE LAND

## Red Rim - Grizzly Wildlife Habitat Management Area



### **Red Rim - Grizzly Wildlife Habitat Management Area**

The Grizzly Segment of the Red Rim Wildlife Habitat Management Area is much different from its counterpart, the Daley Segment. The Grizzly Segment is about 35 miles south of Rawlins at much higher elevations near the foot of the Sierra Madre Mountains.

The Daley and Grizzly segments are managed for the co-existence of wildlife and livestock through a cooperative agreement between the Wyoming Game & Fish Commission and the U.S. Bureau of Land Management. Work will be done here to improve the riparian (river bank or creek bottom) habitat and restore historic Colorado River cutthroat trout.

Mountain shrubs, sagebrush communities, aspen and water birch and cottonwoods can be found along the creek bottom. There are also some mountain meadows. Elk and mule deer winter here, while antelope use the area during the summer. There are ferruginous and redtail hawks, golden eagles, sage grouse and sharp-tailed grouse, songbirds and coyotes.

Five drainages intersect this area. These streams provide very limited fishing for brook trout; however, fisheries management emphasis is directed towards restoration of the native Colorado River cutthroat trout.

Grizzly Segment can be accessed in the winter, but only by snowmobile. Take care not to stress or disturb wildlife during the cold winter months.

*Red Rim - Grizzly is open all year.*