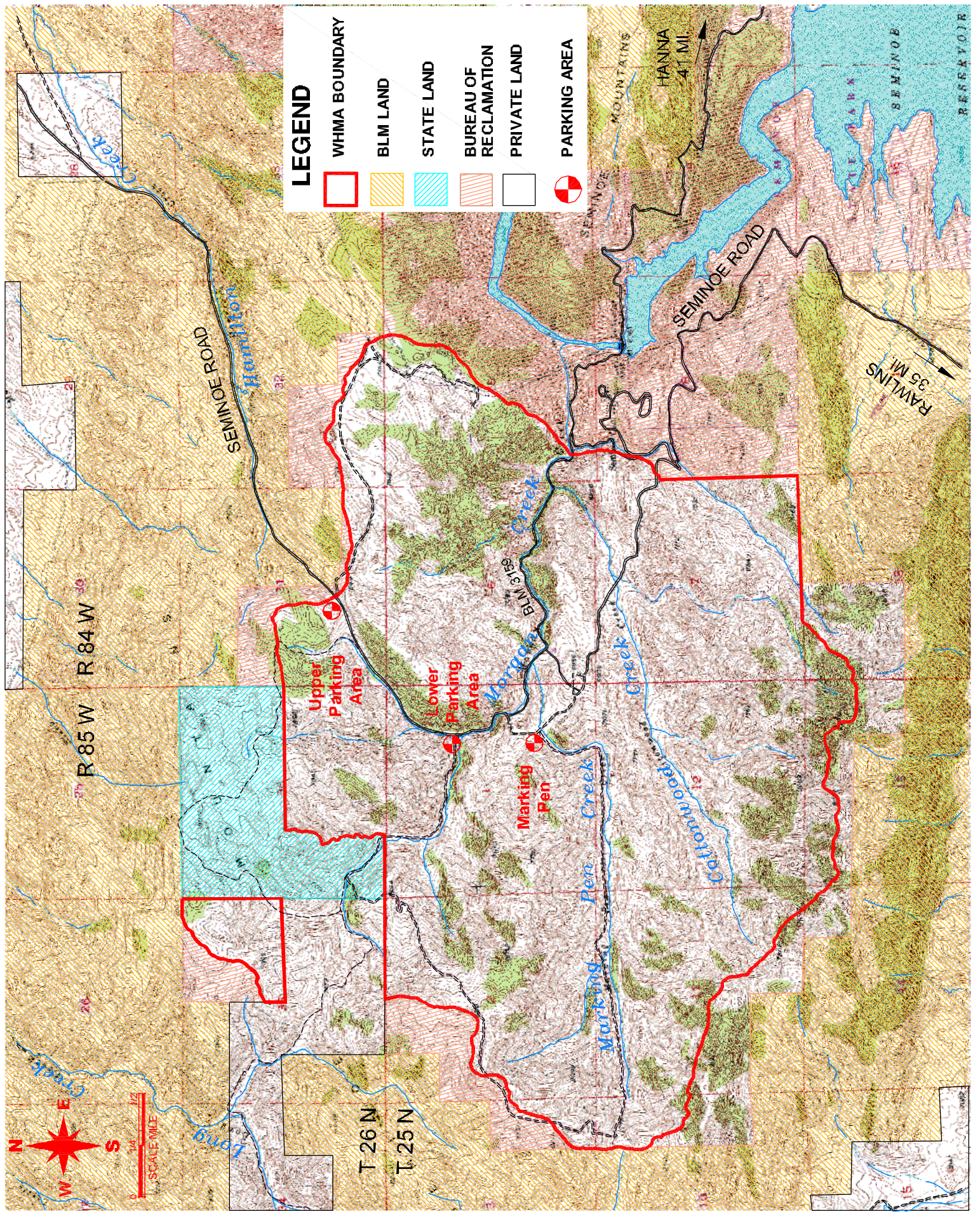


Morgan Creek Wildlife Habitat Management Area



Morgan Creek Wildlife Habitat Management Area



Morgan Creek Wildlife Habitat Management Area

Through a cooperative agreement with the U.S. Bureau of Reclamation, the Wyoming Game & Fish Department manages 4,125 acres of land acquired in 1963. Morgan Creek Wildlife Habitat Management Area, 30 miles north of Sinclair, was originally obtained in 1953 to establish a bighorn sheep herd. The bighorn sheep were transplanted to this area and have made themselves at home in the Seminoe and South Ferris mountain ranges. In addition, elk from Yellowstone National Park were transplanted to this area.

Situated within the Seminoe Mountain, Morgan Creek offers a variety of plant communities. You will find sagebrush grasslands, some conifers, aspen groves and grassy meadows. Besides elk and bighorn sheep, more than 100 mule deer live in the area all year. Yellow-bellied marmots, coyotes, red foxes, and other small critters come and go. There are many species of songbirds, such as the Clark's nutcracker and the canyon wren. Blue grouse can also be found in the area. Pronghorn antelope are not a common site within the area boundaries, but they can be seen on surrounding lands. The popular Miracle Mile is a blue-ribbon trout fishery on the North Platte River between Kortez and Pathfinder reservoirs, approximately six miles from Morgan Creek. Fishing is excellent for rainbow and brown trout on a six-mile stretch of the river. Canada geese and ducks can be hunted along this same stretch of the river. Camping areas were established through a cooperative agreement between the Wyoming Game & Fish Commission, U.S. Bureau of Reclamation and the State Land and Farm Loan Office. While there is no overnight camping allowed directly within the area, camping is permitted in the Miracle Mile area.

Morgan Creek is closed each year from November 1 through April 30.