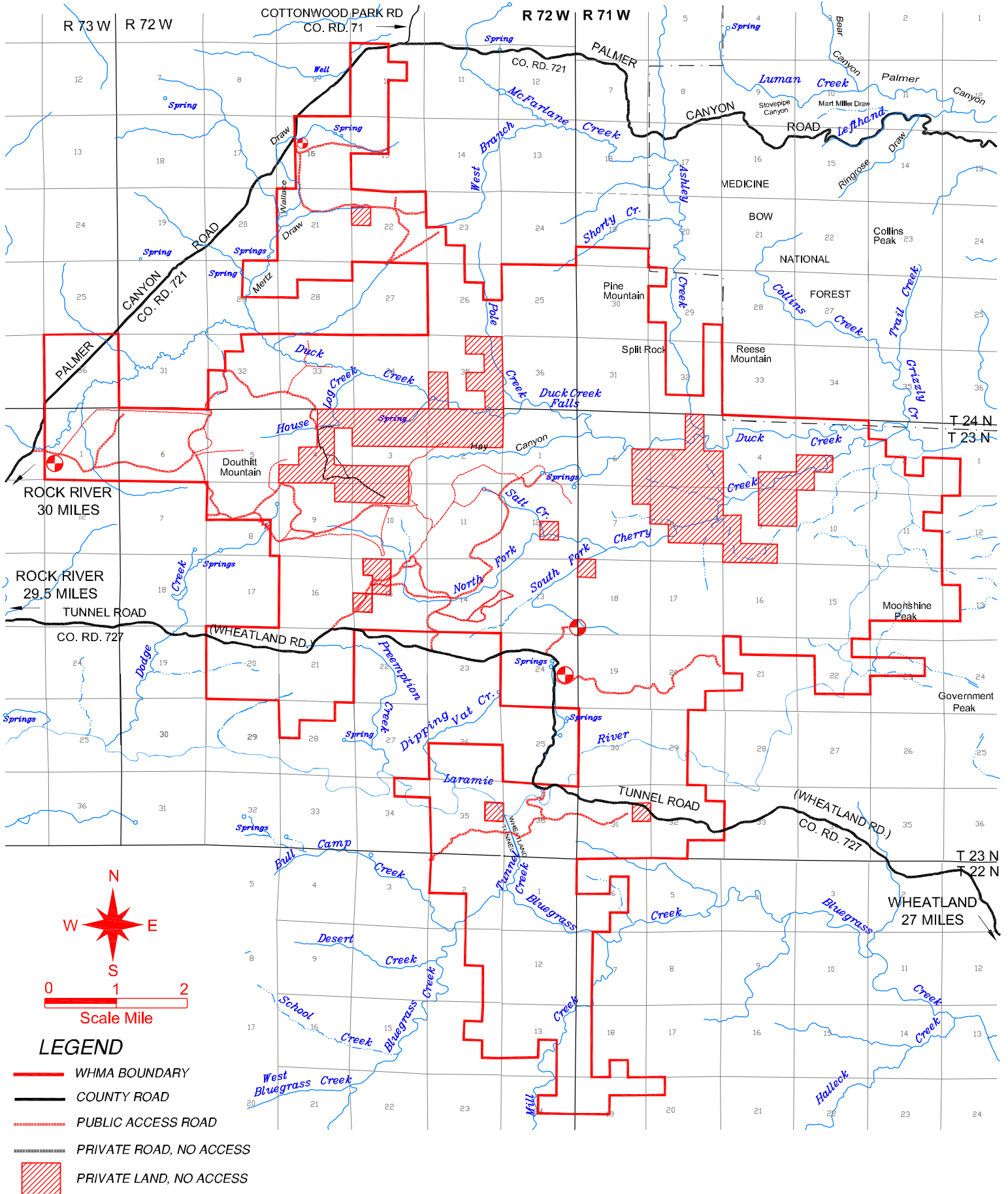
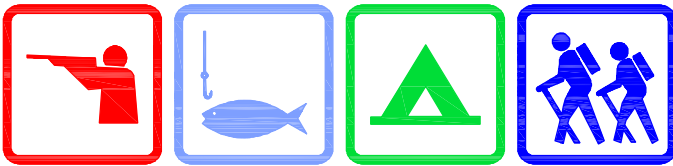


# Laramie Peak Wildlife Habitat Management Area



- LEGEND**
- WHMA BOUNDARY
  - COUNTY ROAD
  - - - PUBLIC ACCESS ROAD
  - PRIVATE ROAD, NO ACCESS
  - ▨ PRIVATE LAND, NO ACCESS



### **Laramie Peak Wildlife Habitat Management Area**

This wildlife habitat area lies 15 miles south of Laramie Peak and 40 miles west of Wheatland where the Laramie Plains meet the southern end of the Laramie Range. The land was purchased for management of all wildlife species with emphasis on fisheries, bighorn sheep, elk and pronghorn antelope. Other resource agencies, including the U.S. Bureau of Land Management (BLM) and the U.S. Forest Service are involved with management of these lands. The Wyoming Game and Fish Department finalized a land trade with Vale Ranch to secure additional access to more than 4,600 acres on private lands. With these private lands and agreements signed by the BLM and the State Land and Farm Loan Office, Laramie Peak provides access to more than 11,000 acres. There are isolated tracts of private lands remaining within the area.

A variety of vegetative types exist here. Grasslands cover one-third of the lands while ponderosa pine, limber pine and junipers cover another third. Sagebrush grasslands cover smaller areas with big sagebrush being the most prominent shrub. Wet meadows make up most of the remainder of the vegetation. Duck Creek Canyon offers visitors a scenic adventure up to Duck Creek Falls where the creek drops 100 feet over a rock ledge. There are more rocky trails into Duck Creek which require the use of ropes for technical rock climbing.

Fifty bighorn sheep may be found in this area with an additional 300 bighorns found in the Laramie Peak Herd Unit. Approximately 300 mule deer, 75 elk, 150 antelope, black bears and coyotes reside here. Wild turkeys, blue grouse, various ducks, songbirds and cottontail rabbits are also present. Fishing for trout is permitted on Duck Creek and Cherry Creek. A man-made pond also provides good fishing opportunities.

There are private land tracts interspersed along and inside the boundary lines of this area. This, along with the rough terrain, makes it difficult for visitors to determine their exact location. Although there are no designated camping areas, camping is allowed. The lands are open to the public all year; however, wind and early snowstorms can hinder vehicle access. Laramie Peak Wildlife Habitat Management Area offers a variety of activities, including hiking, fishing, hunting and wildlife observation.

*Laramie Peak is open all year except for Hay Canyon, Tony Ridge, and Duck Creek Canyon areas which are closed from December 1 through April 30 each year.*