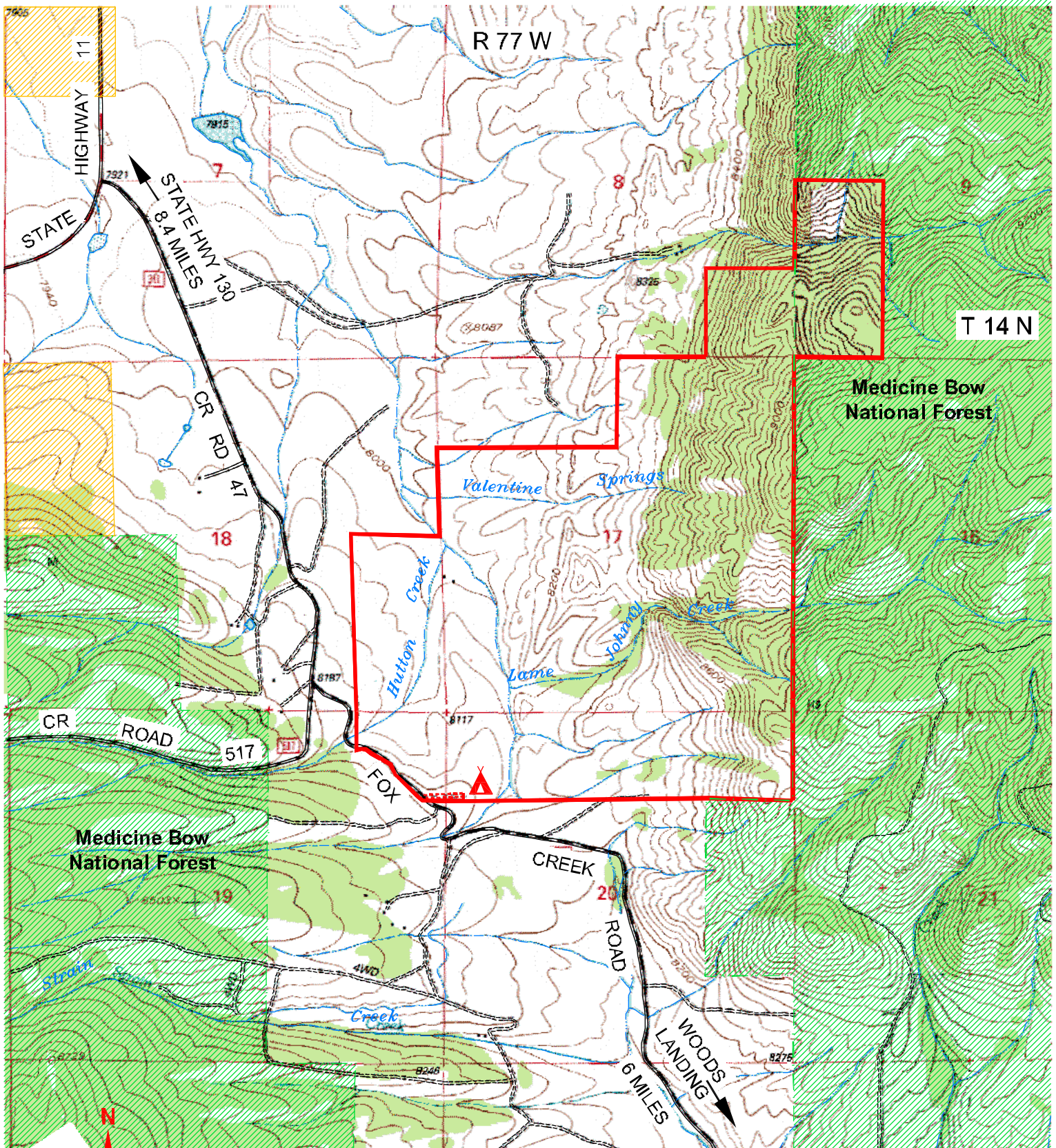
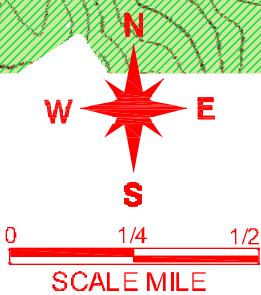




Forbes/Sheep Mountain Wildlife Habitat Management Area






LEGEND



-  WHMA BOUNDARY
-  BLM LAND

-  FOREST LAND
-  PRIVATE LAND

-  CAMPING AREA
-  ACCESS ROAD
-  MEDICINE BOW NATIONAL FOREST BOUNDARY

Forbes/Sheep Mountain Wildlife Habitat Management Area



Forbes/Sheep Mountain Wildlife Habitat Management Area

Travel 22 miles west of Laramie on Wyoming Highway 130 and then nine miles south on the Fox Creek Road. The 950-acre area is at the western end of Sheep Mountain and is an important winter-feeding site for about 500 deer and 300 elk. The Wyoming Game & Fish Commission purchases this land to provide improved public access to the 20,000 acres of wild lands administered by the U.S. Forest Service on Sheep Mountain.

You will find more than deer and elk in this rough, rocky terrain. Mountain lions, bobcats and coyotes roam here. Clark's nutcrackers, hairy woodpeckers, turkey vultures, pine siskins and goshawks are just a few of the bird species present.

Land owned by the Wyoming Game & Fish Commission and the U.S. Forest Service on Sheep Mountain provides excellent opportunities for hiking, wildlife watching and hunting. There is a foot trail to the top of Sheep Mountain, an improvement over alternate routes within the habitat area.

Forbes is closed each year from January 1 through June 30.