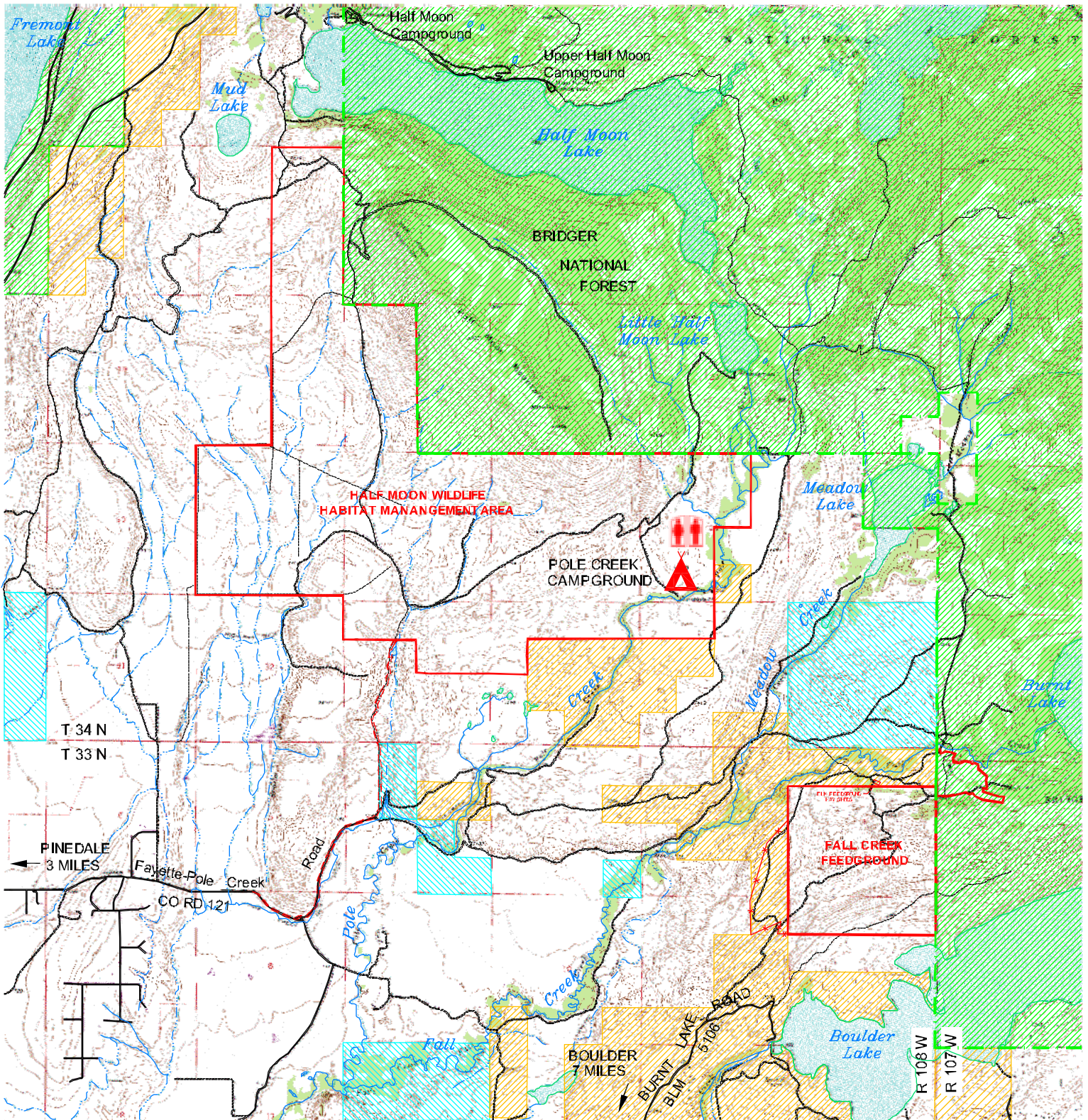
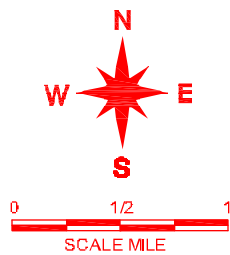






# Fall Creek and Half Moon Wildlife Habitat Management Areas



## LEGEND



-  PARKING AREA
-  CAMPING AREA
-  COMFORT STATION
-  ACCESS ROAD

-  WHMA BOUNDARY
-  BLM LAND
-  STATE LAND
-  PRIVATE LAND
-  FOREST LAND

## Fall Creek and Half Moon Wildlife Habitat Management Areas



### **Fall Creek and Half Moon Wildlife Habitat Management Area**

Half Moon and Fall Creek Wildlife Habitat Management Areas are six miles southeast of Pinedale and provide quality winter range for up to 700 elk and a large population of mule deer. Vegetative communities on the 4,530 acres consist mostly of sagebrush grasslands and conifer forests atop Half Moon Mountain. Perhaps the most striking feature of the area is Half Moon Mountain, which starts at 7,400 feet elevation and rises to 8,200 feet in less than a mile. Besides providing habitat for elk and deer, Half Moon and Fall Creek are home to pronghorn antelope, sage grouse, moose, rabbits, coyotes and many songbirds. Hunt for deer, antelope or sage grouse in the lower areas, or fish for brook and brown trout in Pole Creek. Take advantage of the wildlife viewing and photography opportunities. The area provides access to adjacent U.S. Forest Service lands where additional recreational opportunities exist.

*Half Moon and Fall Creek are closed each year from November 1 through April 30.*