


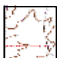



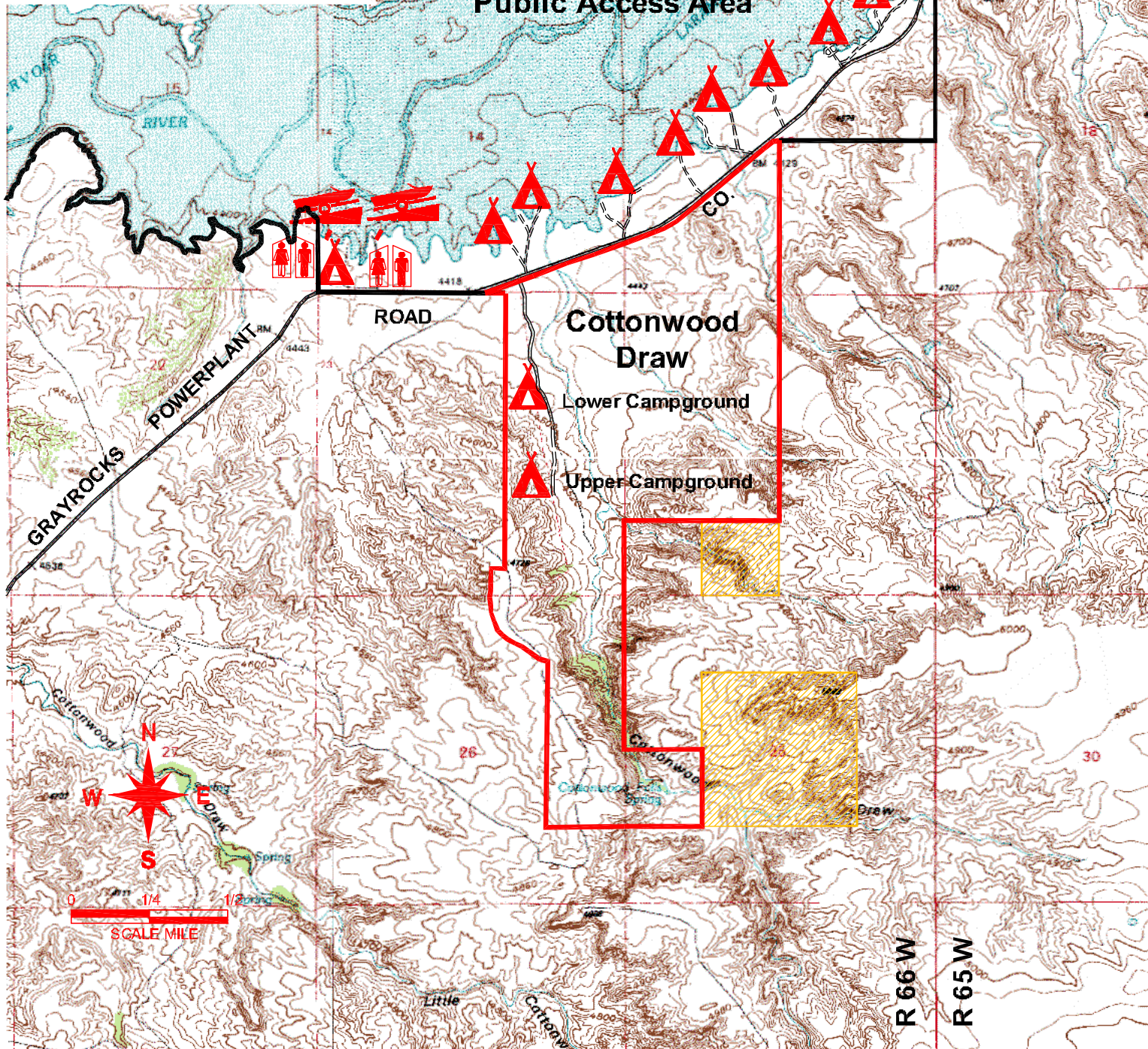
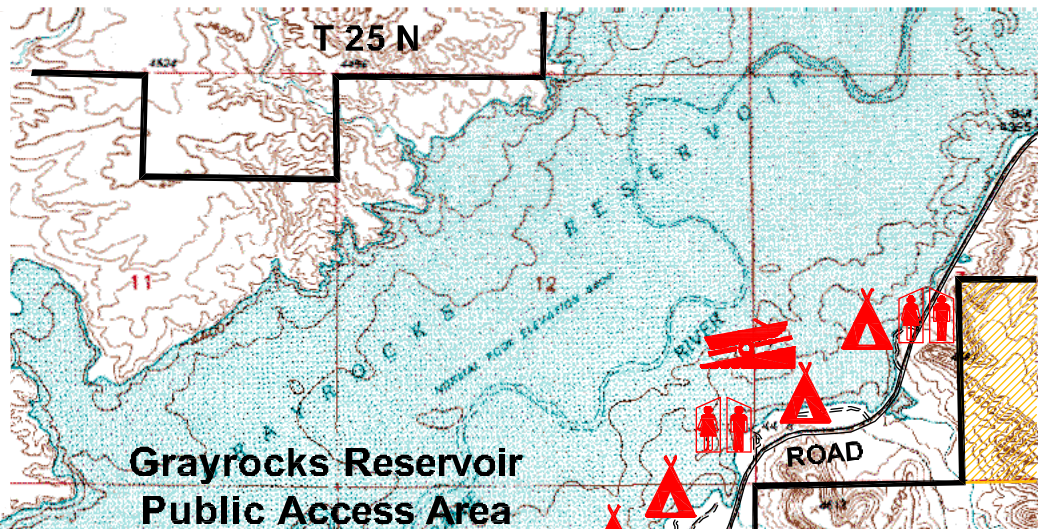


# Cottonwood Draw Wildlife Habitat Management Area

## LEGEND

-  COTTONWOOD DRAW WHMA
-  GRAYROCKS PUBLIC ACCESS AREA
-  BLM LAND
-  PRIVATE LAND
-  CAMPING AREA
-  BOAT RAMP
-  COMFORT STATION



## Cottonwood Draw Wildlife Habitat Management Area



### Cottonwood Draw Wildlife Habitat Management Area

Cottonwood Draw Wildlife Habitat Management Area is seven miles south of Guernsey and nine miles northeast of Wheatland near Grayrocks Reservoir. Through a cooperative agreement with the Missouri Basin Power Project, the Wyoming Game and Fish Commission manages these lands for public recreation and to improve present wildlife habitat. This 720-acre parcel provides access for quality hunting opportunities in the Cottonwood Draw area. Providing winter range for big game species, specifically deer, and to provide hunting and recreational use of the wildlife resource are the management objectives of this area. Cottonwood Draw WHMA also provides access to adjoining BLM lands to the south and east.

Rugged buttes, cliffs, and steep draws dominate this sagebrush grassland. Cottonwood Creek provides a source of water for the wildlife that frequents the area including deer, turkeys, and a wide variety of songbirds. Turkey vultures and other raptors often can be observed riding the thermal air currents above the canyons.

Motorized vehicle access is limited to the access road. However, primitive camping is allowed in the two parking areas.

*Cottonwood Draw WHMA is open year-round.*